

**Report to Partnership Meeting 13 April 2017**

**RESEARCH AND STRATEGY DELIVERY**

**Active Travel Update**

**Purpose of Report**

To provide Members with an update on active travel projects in the area which HITRANS are involved with or leading on.

**Smarter Choices Smarter Places:**

HITRANS Active Travel Officer recently met with the other RTP officers and Liftshare, to gauge what other regions are doing to promote car sharing opportunities.

All other RTPs currently use the Liftshare platform. Recognising that ‘If You Care Share’ would require significant development for it to continue to be fit for purpose, HITRANS have investigated alternative options for setting up a basic area wide platform that we can promote and monitor as a two year pilot.

The associated cost for the ‘Hltravel umbrella’ platform is £10,000. HITRANS have spoken with officers in each partner Local Authority and have agreed to pay £5,000 towards the development of the platform, with each authority contributing £1,000.

There are additional options for developing the platform including undertaking events, or creating specific pages for Local Authorities underneath the area wide platform which have been circulated to officers for discussion at an additional cost per local authority.

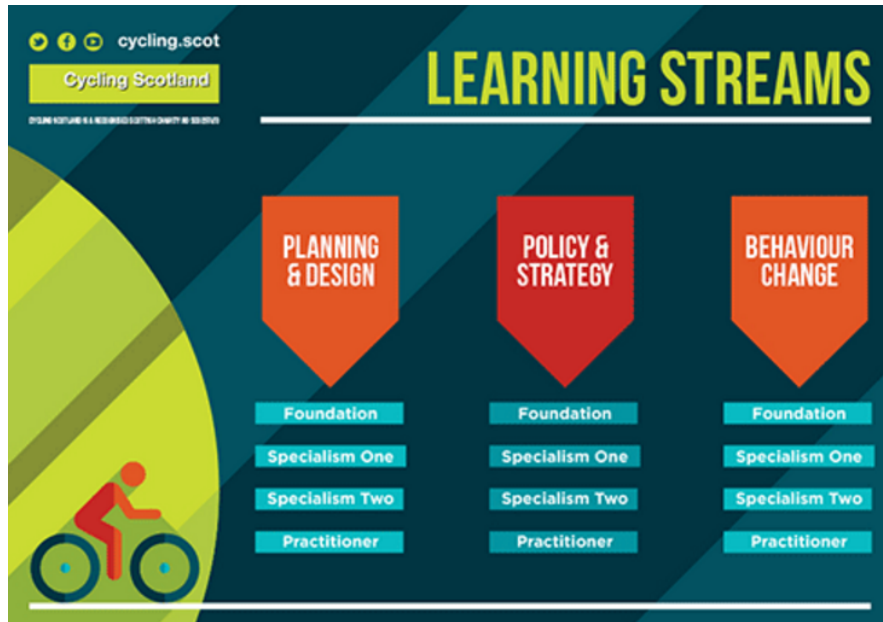
The basic website will look and have similar functionality as the SEStrans website but adapted to our local area and adopt the Hltravel logo and branding:



## Training:

During January 2016 HITRANS offered professional development training for local authority officers in partnership with Cycling Scotland. We have been asked we would be keen to run another round of training, moving on from Foundation/Level 1, to enhance learning across the area.

HITRANS are keen to gauge which partner areas would be keen for training, and at which level/ topics would be most appropriate. The overview of Cycling Scotland training is provided in the image below:



## Community Links:

This table provides an overview of all Community Links Applications within the HITRANS area. The Active Travel Officer has been liaising with the Community Links team to encourage development of as many key links in our area as possible, highlighting regionally important links, and those which the councils have prioritised.

Local Authority	Project Name	CL request (£k)	Total project
Argyll and Bute	Bishopton Rd connectivity between Lochgilphead and Crinan Canal	550k	1.1M
Argyll and Bute	Carrdale Design works	10k	20k
Argyll and Bute	Fionnphort village to community hall link	258k	516k
Argyll and	Helensburgh and	115k	230k

Bute	Lomond Cycleway-Cardross link		
Argyll and Bute	Peniver Links to community hall	125k	250k
Argyll and Bute	B833 Roseneath to Roseneath caste park shared use	250k	500k
Argyll and Bute	South Shian Path	50k	100k
Argyll and Bute	Dunoon Esplanade phase 2- west bay to town centre	150k	300k
Argyll and Bute	Oban High School, detailed designs for path and road crossing	15k	30k
Argyll and Bute	Cruachan Cottages, Taynuilt	10k	20k
	<b>Total</b>	<b>£1,533,000</b>	<b>£3,066,000</b>
Highland	Cavell Gardens Contraflow	35k	70
Highland	Link bridge and path between Stoneyfield BP and Retail park	75k	150
Highland	Inshes Park- phase 2	175k	495
Highland	Tain 3-18 campus	100k	200
Highland/HITRANS	Inverness Railway Station Placemaking	620k (asking for £100k this year)	1,240,000
HIE/HITRANS	Inverness Campus- North Bridge	1,102,785	2,205,570
	<b>Total</b>	<b>£2,107,785</b>	<b>£4,360,570</b>
Moray	Connecting Elgin town centre with residential and commercial areas to the south	<b>50</b>	<b>100k</b>
Orkney	Kirkwall Harbour Flood Prevention street improvements	<b>363,724</b>	<b>2,151,000</b>
	<b>Total for HITRANS area</b>	<b>£4,054,509</b>	<b>£9,674,570</b>

HITRANS have submitted two projects within this application round in partnership with Highlands and Islands Enterprise (HIE) and The Highland Council.

### North Bridge

This application builds on our 2014 application on behalf of HIE for the design and build of a pedestrian, cycle and bus bridge adjacent to the Golden bridge over the A9, linking the Inverness Retail and Business Park, Inverness Campus and over towards the Raigmore area of town. At the time the public transport element was unable to find match funding, and in the past few years initial design has been achieved. This application has been submitted by HIE, in partnership with HITRANS for the construction of the bridge during 2017/18.

**Inverness Railway Station Improvements:**

The objective of this Community Links application is to add value to the improvements identified as part of the proposed upgrade of Inverness Railway Station. The project will seek to ensure that the accesses and streetscape on the approaches to the rail station are improved for active travel. Match funding for the project is being provided by The Highland Council and if successful the project will help establish to their ambitious Community Links PLUS entry for Academy Street / Milburn Road.

HITRANS and The Highland Council are seeking funding for initial design, feasibility and public consultation for 2017/18 and construction in 2018/19.

**Recommendation**

Members are invited to note the Active Travel Update.

RTS Delivery

Impact - Positive

Comment – This work supports RTS objectives and the monitoring of their implementation.

Policy

Impact - Positive

Comment – This work supports the development of our Active Travel Policies H27a to H27d in the current Regional Transport Strategy

Financial

Impact – Positive

Comment - Funding has been allocated from within the HITRANS / Sustrans Community Links funding or HITRANS Business Plan for all the commitments identified within this report.

Equality

Impact – Positive

Comment – HITRANS support for Active Travel helps eliminate the barriers to travel for all and removes a number of physical accessibility barriers

**Report by: Fiona McInally**  
**Designation: Active Travel Officer**  
**Date: 5<sup>th</sup> April 2017.**