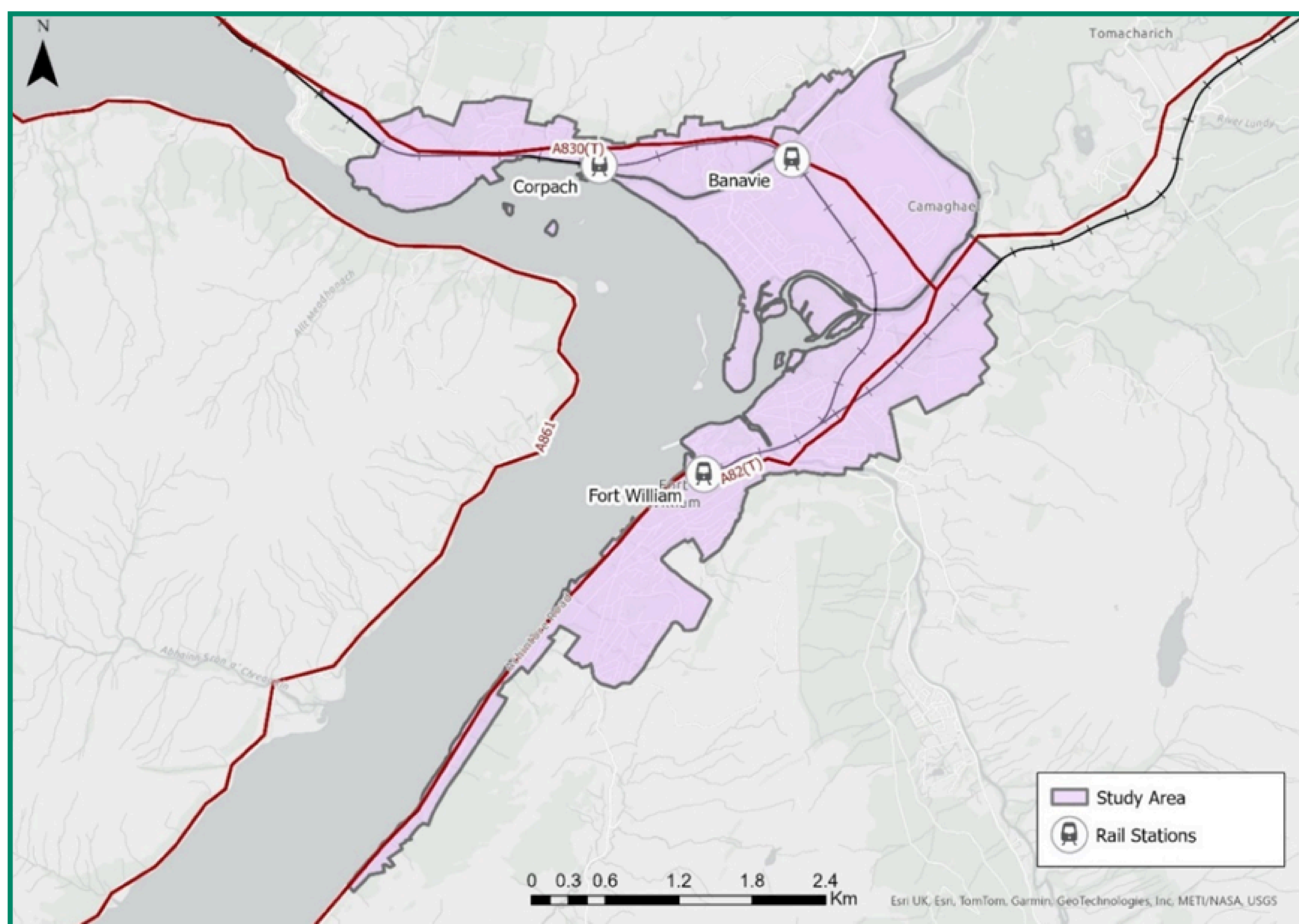


FORT WILLIAM INTEGRATED TRANSPORT PLAN

What is the Fort William Integrated Transport Plan?

The Fort William Integrated Transport Plan is a strategic study aimed at improving transport infrastructure and connectivity in and around Fort William. It aims to address long-standing issues such as trunk road resilience, journey time reliability and accessibility.

The study will include appraisal of 'multi-modal' (e.g. car, bus, train, cycling, walking and wheeling) transport solutions within Fort William's urban boundary. A clear action plan and programme for delivery will be provided for whichever options are identified during the study as the preferred way forward.



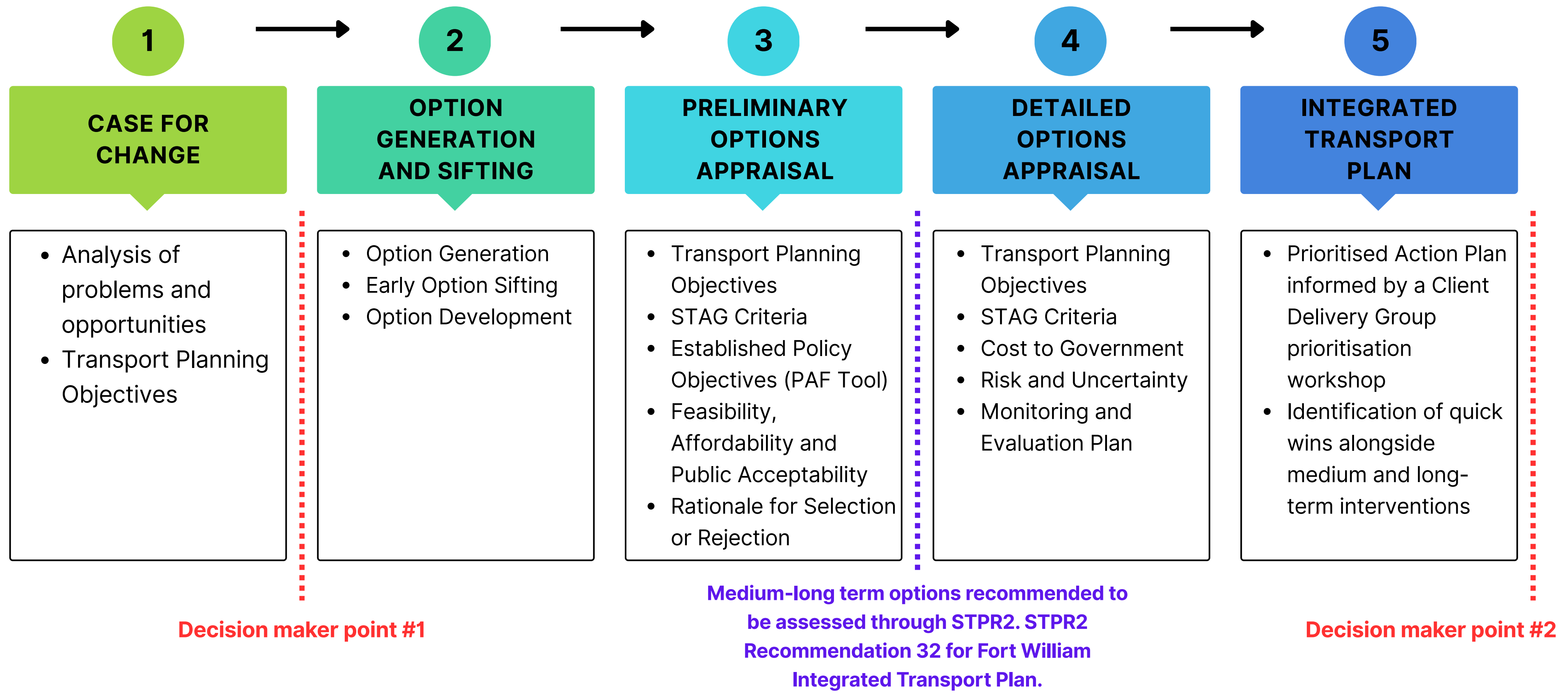
FORT WILLIAM INTEGRATED TRANSPORT PLAN



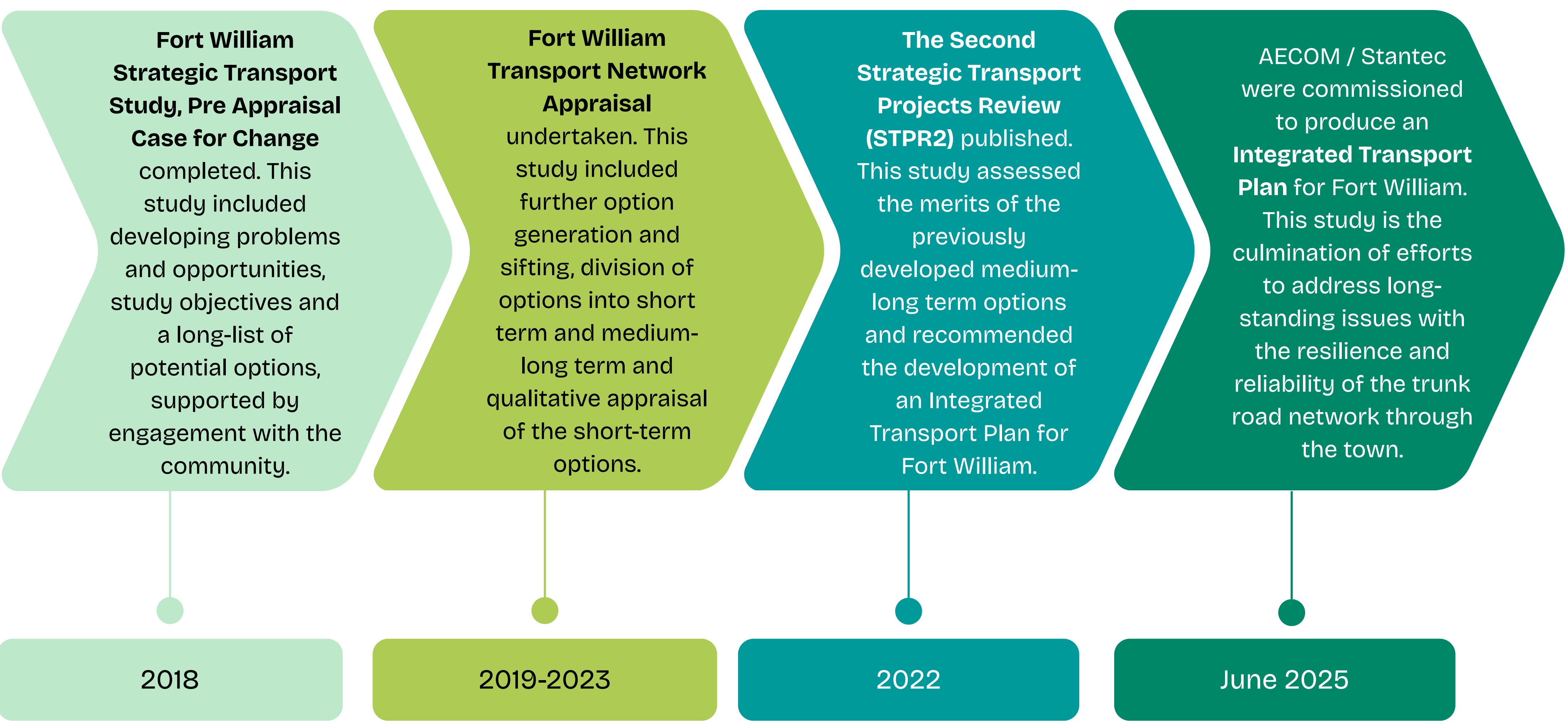
In partnership with



Scottish Transport Appraisal Guidance (STAG) Process



The Journey So Far

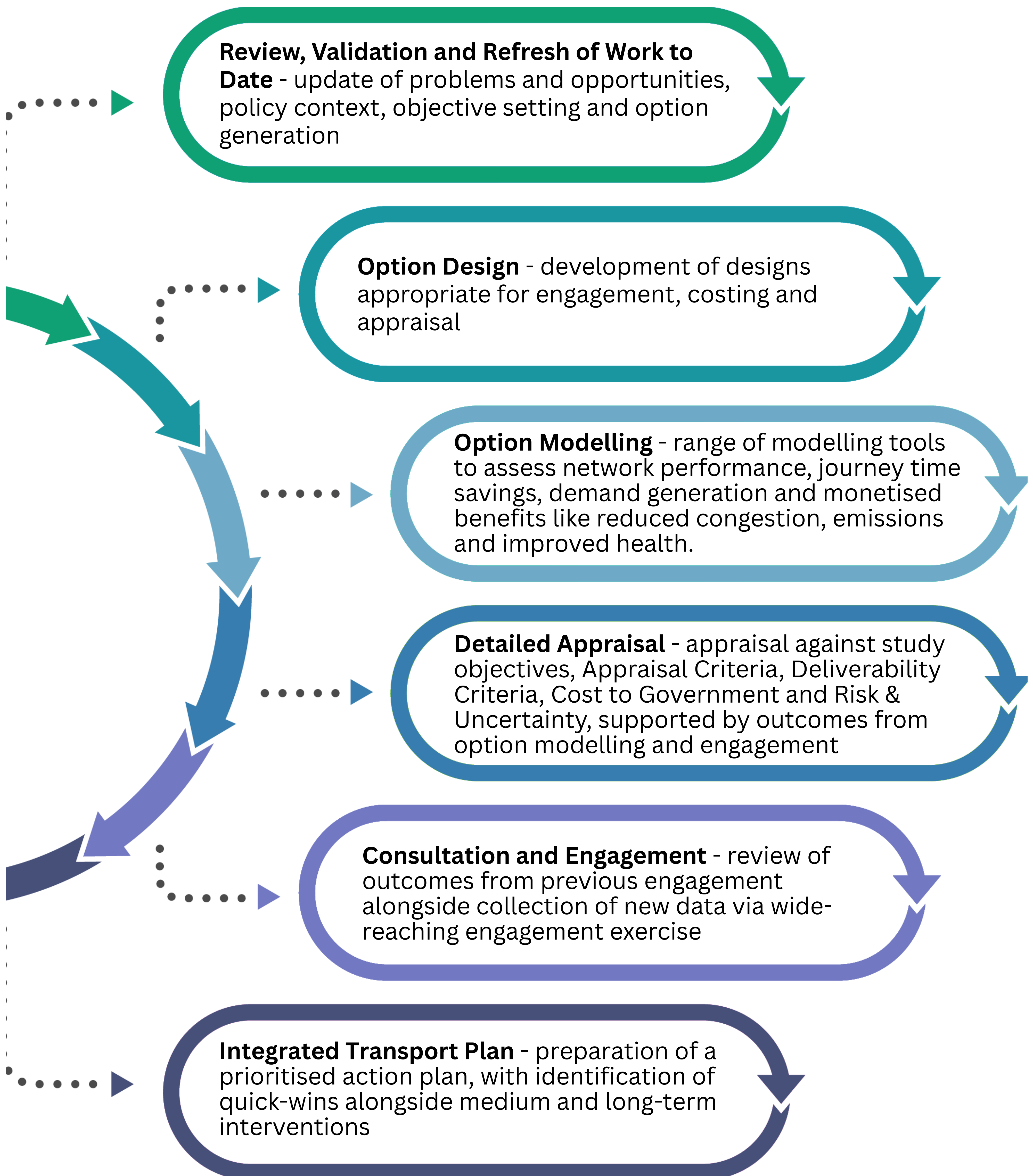


Contact us: FortWilliamITP@aeacom.com



FORT WILLIAM INTEGRATED TRANSPORT PLAN

Study Approach



FORT WILLIAM INTEGRATED TRANSPORT PLAN

Review, Validation and Refresh of Work to Date

Data Considered

Policy Review

Socio-Economic Baseline Update

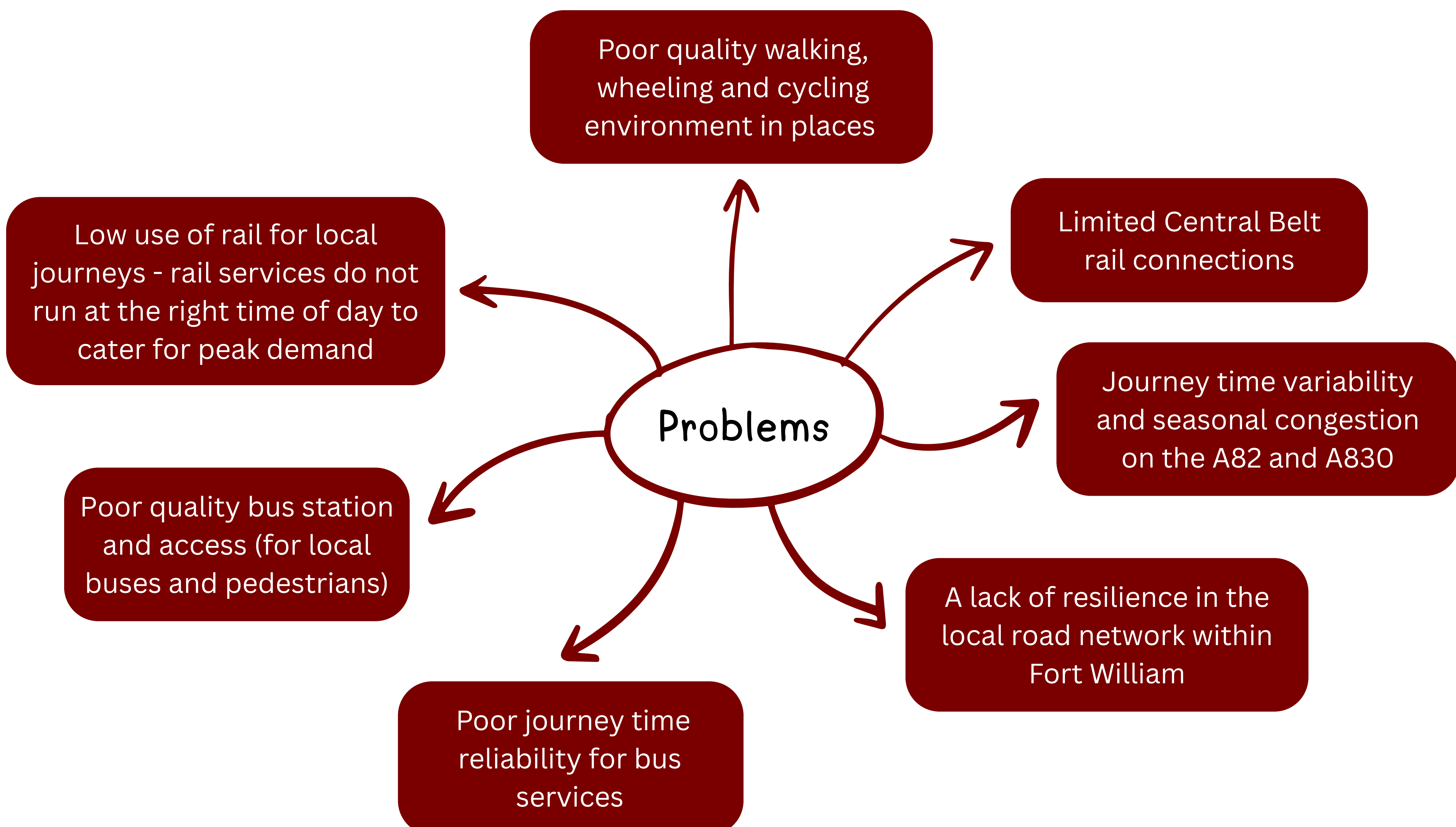
- > Population
- > Economic activity
- > Industrial structure
- > Tourism data
- > Travel to work and modal share

Development Baseline Update

- > Industry Expansion
- > Housing growth
- > FW2040 projects and ongoing development strategy
- > Other committed Local Development Plans

Transport Baseline Update

- > Active travel
- > Bus provision
- > Rail infrastructure and services
- > Ferry service
- > Freight volumes
- > Road - traffic flows, delay, seasonality, reliability



FORT WILLIAM INTEGRATED TRANSPORT PLAN



In partnership with



Objectives

The aims of the Fort William Integrated Transport Plan are currently being developed but will seek to:

Reduce travel time delay and variability whilst minimising the creation of additional traffic

Improve the resilience of the transport network

Improve integration between different transport modes

Increase the proportion of people walking, wheeling, cycling and using public transport

Support economic growth whilst reducing the negative effects of division in communities

Increase freight movements by water and/or rail

FORT WILLIAM INTEGRATED TRANSPORT PLAN



In partnership with



Consultation and Engagement

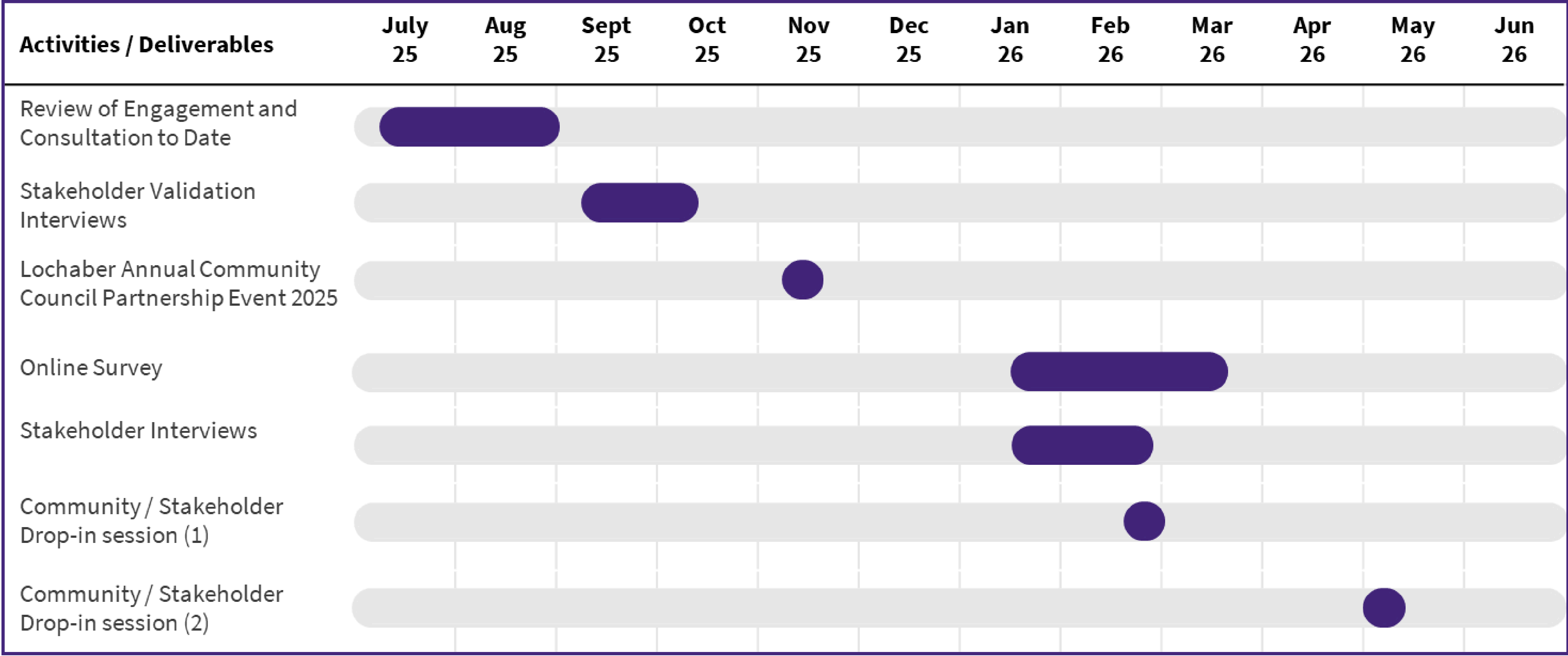
Engagement to support the development of the Fort William Integrated Transport Plan is being split into two parts - Part 1: Targeted Stakeholder Engagement (2025) and Part 2: Wider Public and Stakeholder Engagement (2026).

We understand that extensive engagement has been undertaken with the local community in recent years and so initial work has focused on reviewing the outcomes from previous engagement exercises and validating these findings through targeted stakeholder interviews.

This means that the majority of engagement activities will be focused at a later stage of the study when more information about potential options is available to share, ensuring the community is able to provide meaningful feedback on the proposals.

Key engagement activities include:

- Initial stakeholder validation interviews
- Lochaber Annual Community Partnership Event 2025
- Subsequent targeted stakeholder interviews
- An online survey for the public and stakeholders
- Two in-person drop-in sessions for the public and stakeholders



FORT WILLIAM INTEGRATED TRANSPORT PLAN

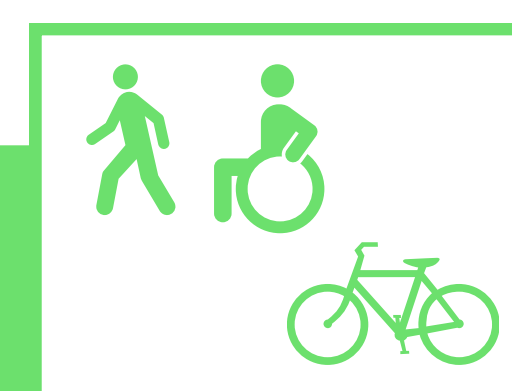
Options

Options have been generated from a variety of sources including the previous Case for Change and Preliminary Appraisal studies, the Fort William 2040 programme, Bus Infrastructure Fund projects, The Highland Council Active Travel Masterplan and the generation of new options.



Road Options:

Opportunities for road infrastructure interventions (including bypasses), road space reallocation and localised junction improvements



Active Travel Options:

Opportunities for improved active travel connections, bike storage, pedestrian crossings and wayfinding signage



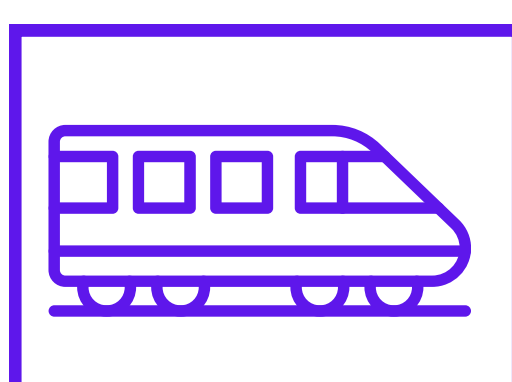
Freight Options:

Opportunities for increased freight movements through use of the canal / Loch Linnhe and rail



Bus Options:

Opportunities for bus priority measures (bus gates), relocation of the bus station and improvements to bus stop infrastructure



Rail Options:

Opportunities for upgrades to the railway station, restructuring of the rail timetable and the provision of additional local routes / stations



Multi-Modal Options:

Opportunities for packages of other options and development of integrated transport solutions such as mobility hubs

FORT WILLIAM INTEGRATED TRANSPORT PLAN



In partnership with



Next Steps

