

Inverness Interchange Bus Station & Car Park Feasibility Study

HITRANS

January 2026

Preferred Options Draft Visualisations

Austin-Smith:Lord



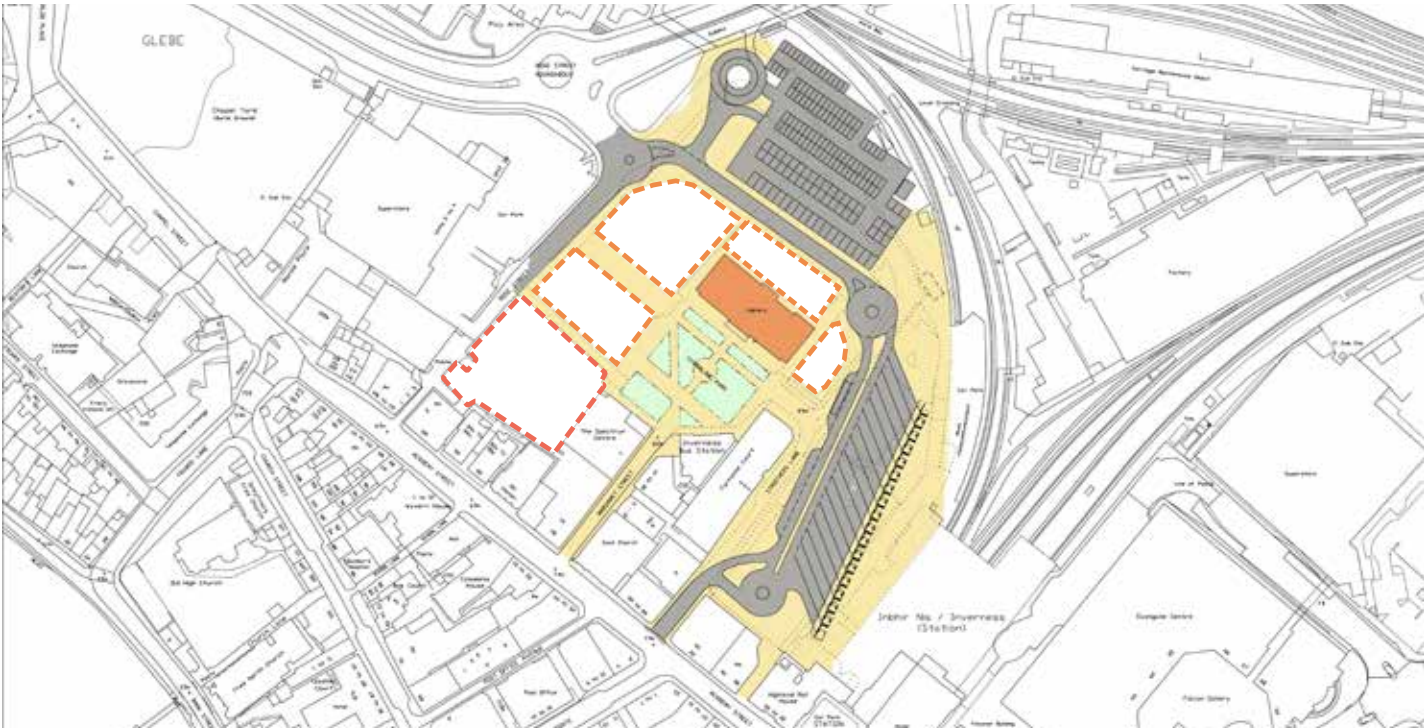
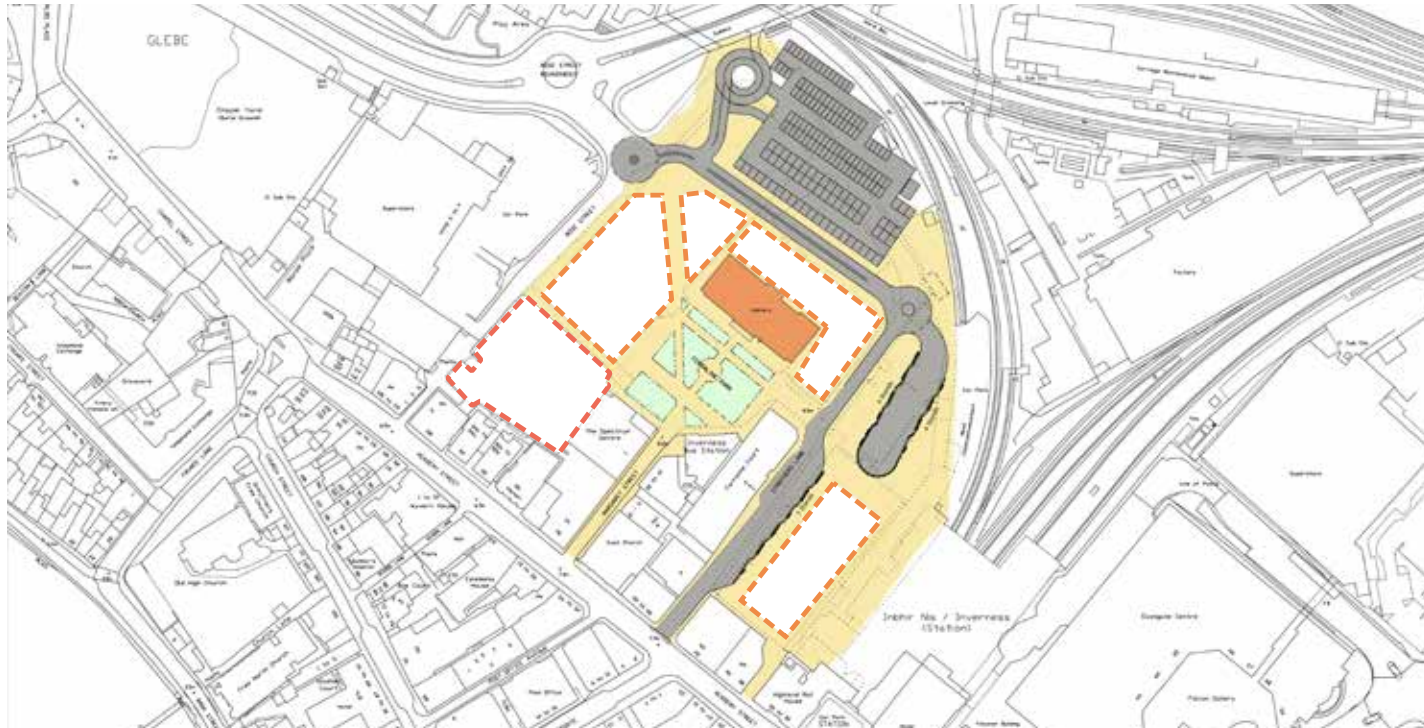
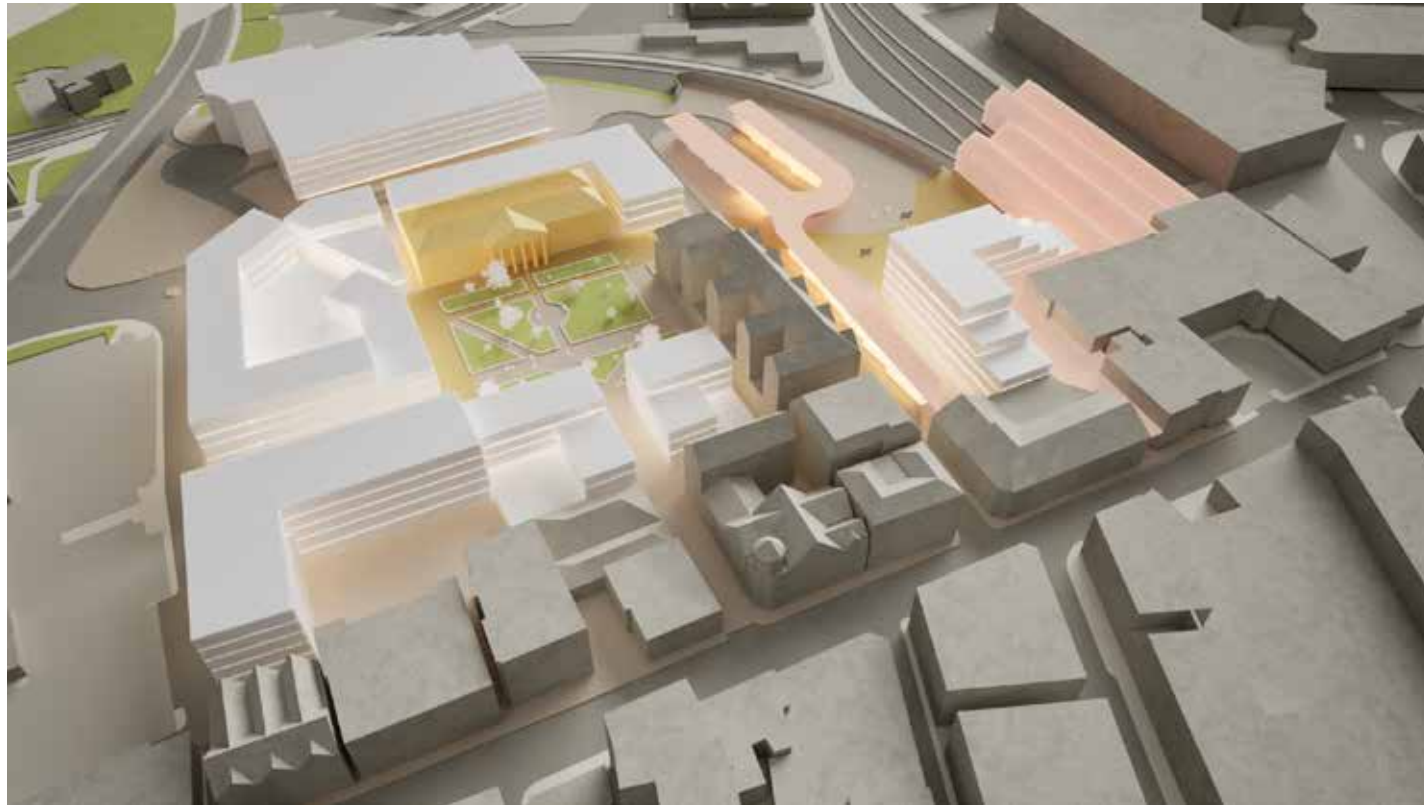
Introduction : Preferred Options

As part of the feasibility study, the following three Options have been selected:

- **Option I:** Locating the Bus Station north and east of the Library with a multi-storey car park to the north and mixed use development to the west, south, and east, in the TK Maxx site.
- **Option J:** Locating the Bus Station along Strothers Lane, with a multi-storey car park to the north and mixed use development around the Library and to the west and south.
- **Option L:** Locating the Bus Station to the east against the railway lines with a multi-storey car park to the north and mixed use development around the Library and to the west and south



Option I



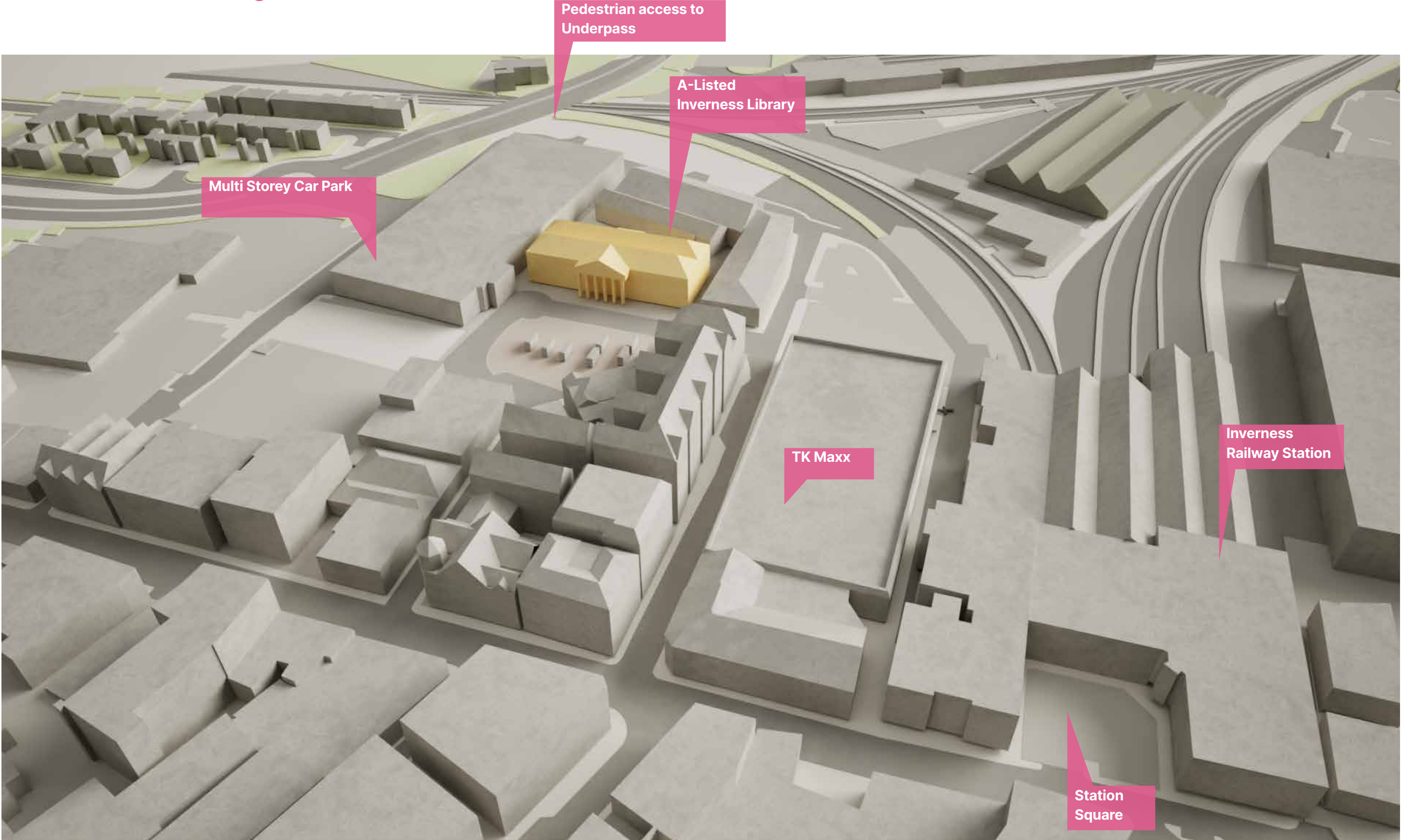
Option J

Option L

Preferred Options Visualisations

Preferred Options Visualisations

Overview - As Existing



View from south-east

Overview - Option I



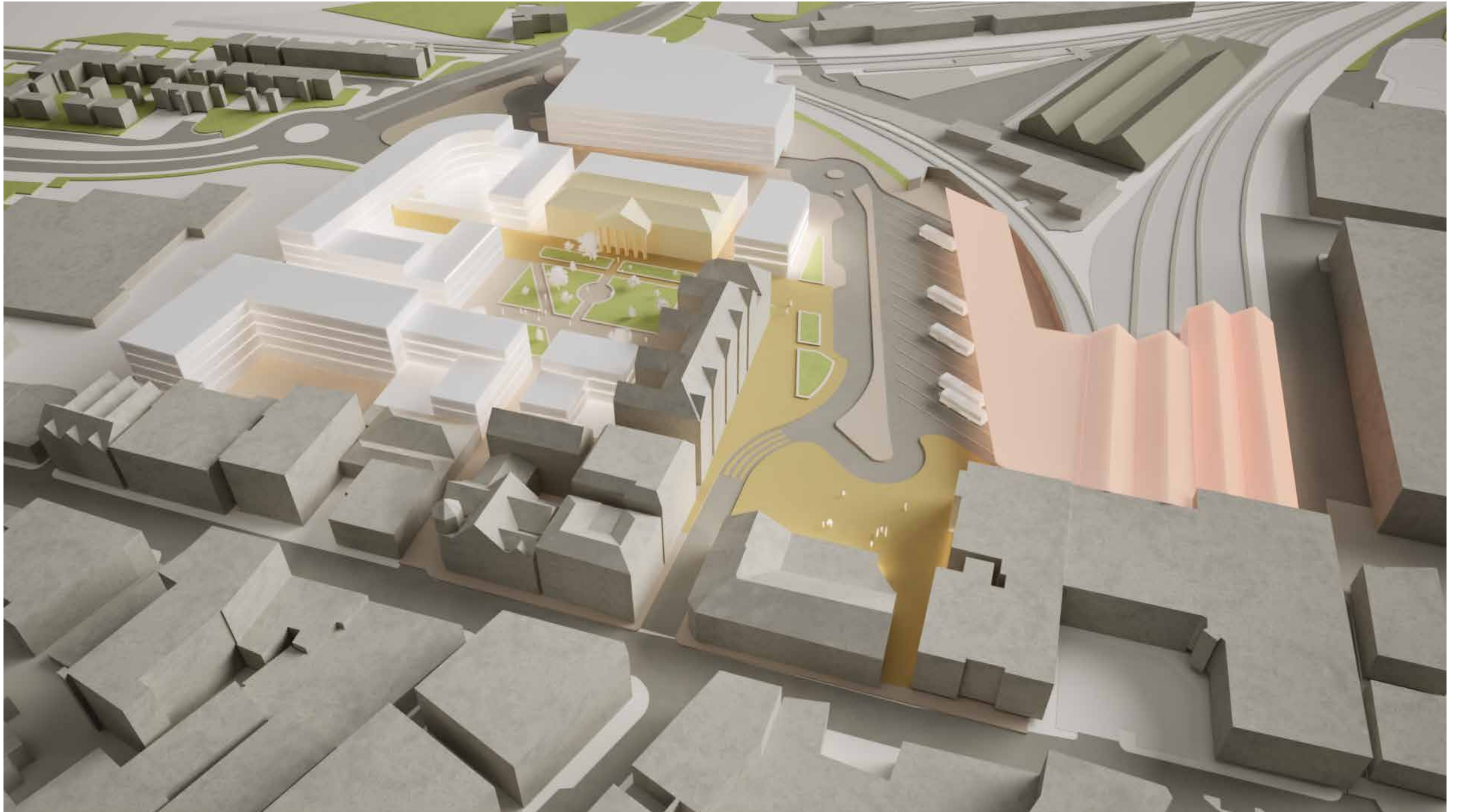
View from south-east

Overview - Option J



View from south-east

Overview - Option L

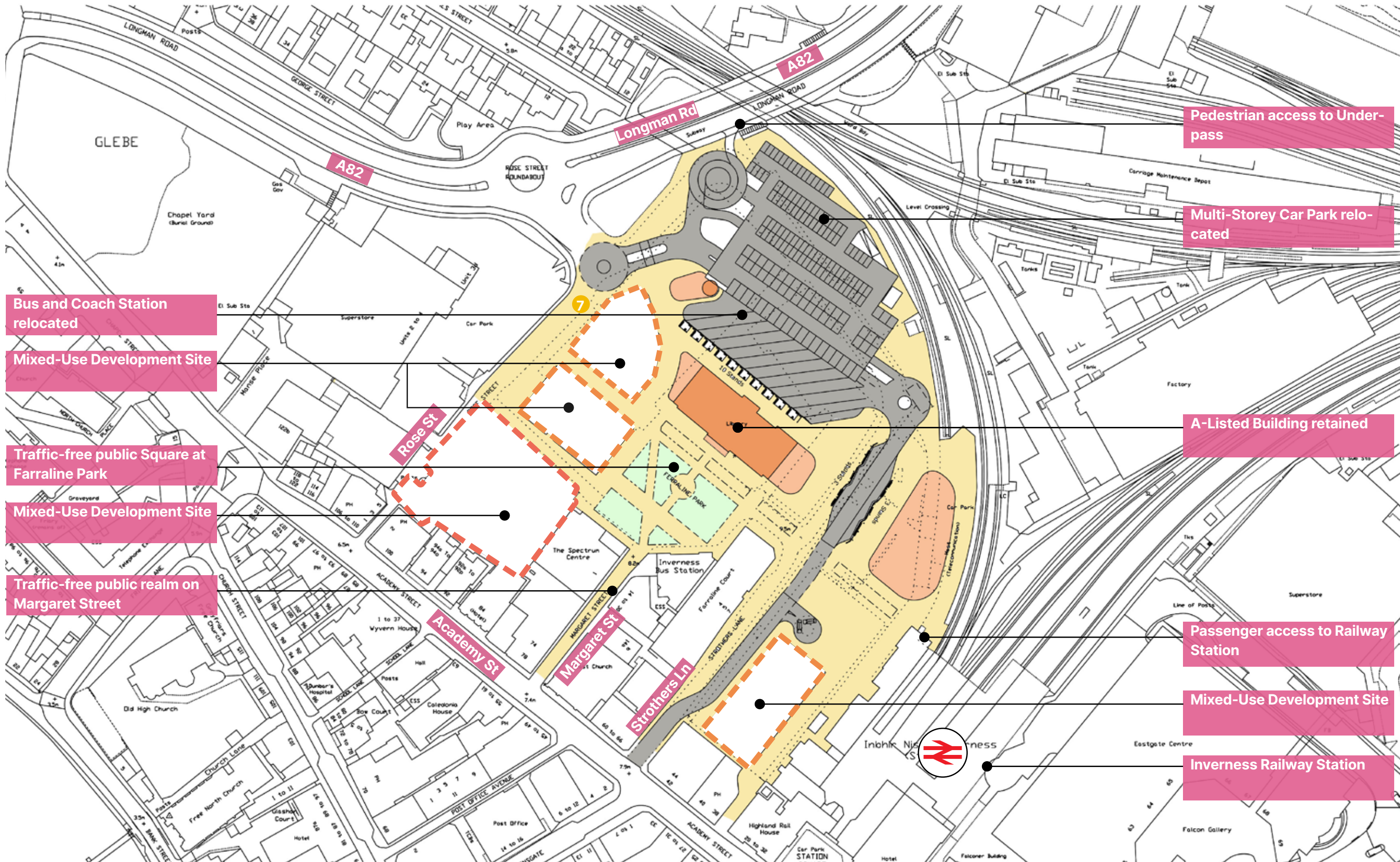


View from south-east

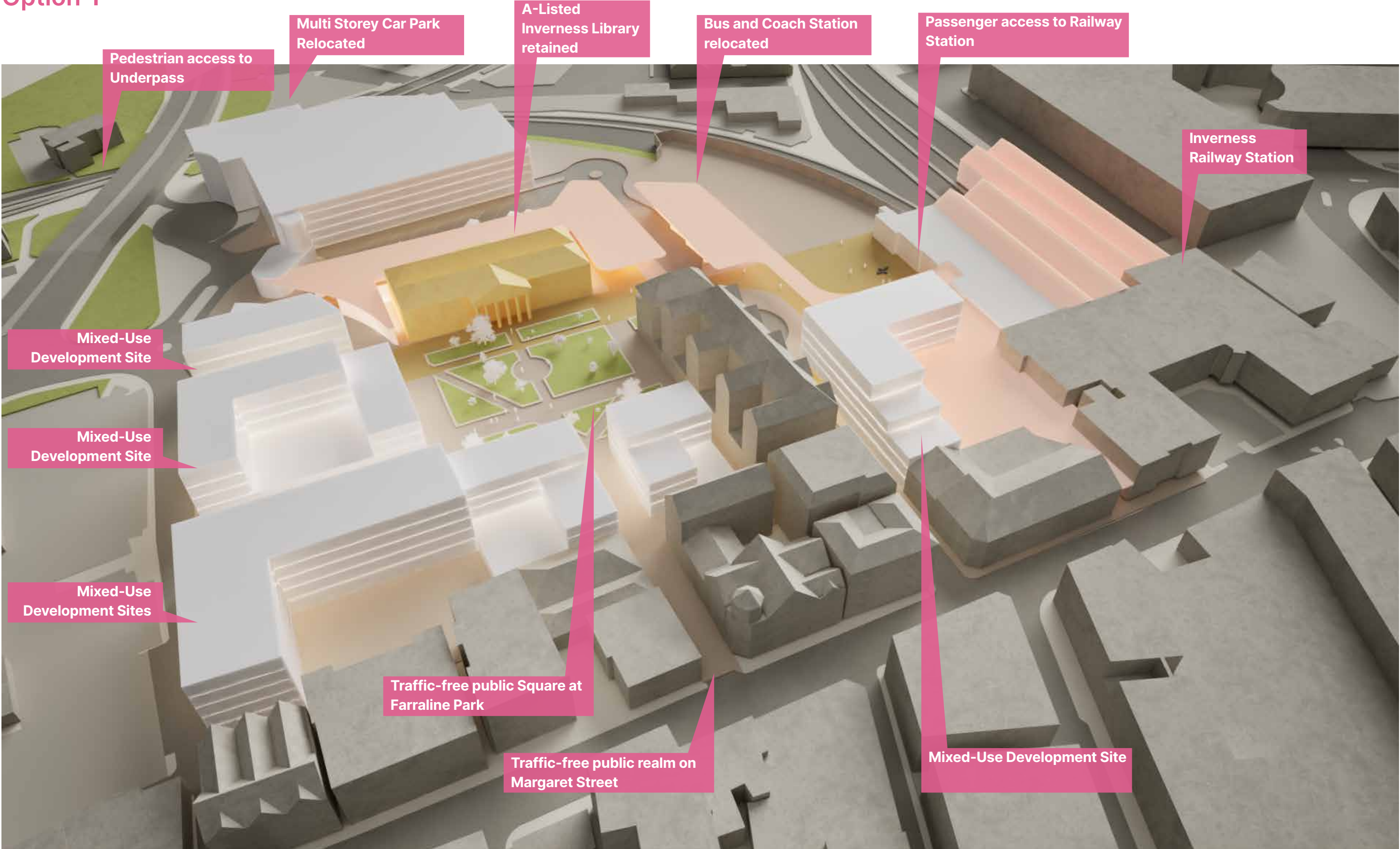
Option I

Option I

Library DIRO and TK Maxx Hybrid 16 Stands - 878 Total Car Parking 6 floors



Option I



View from south-west

Option I



View from south-east

Option I



View from north-east

Option I

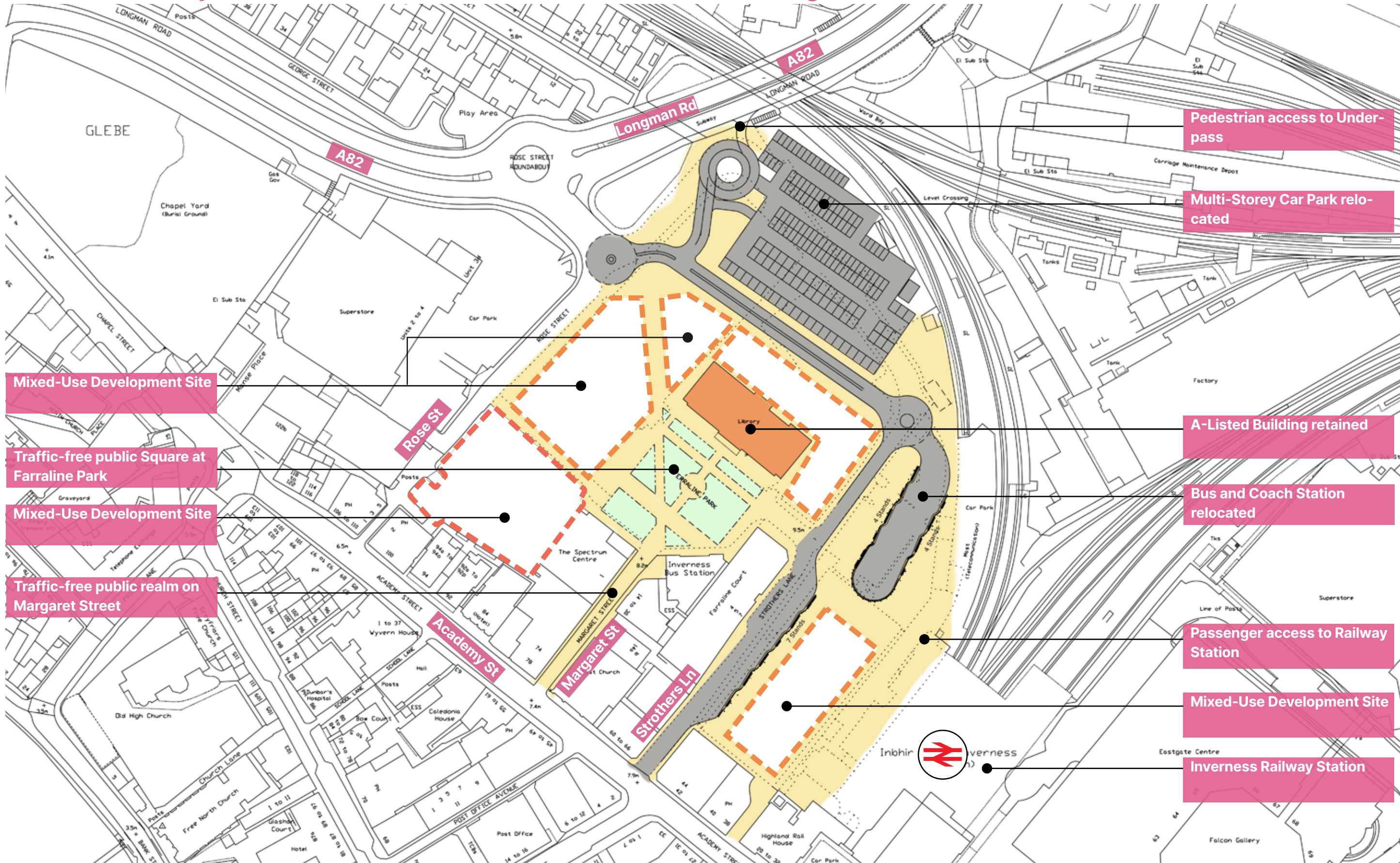


View from north-west

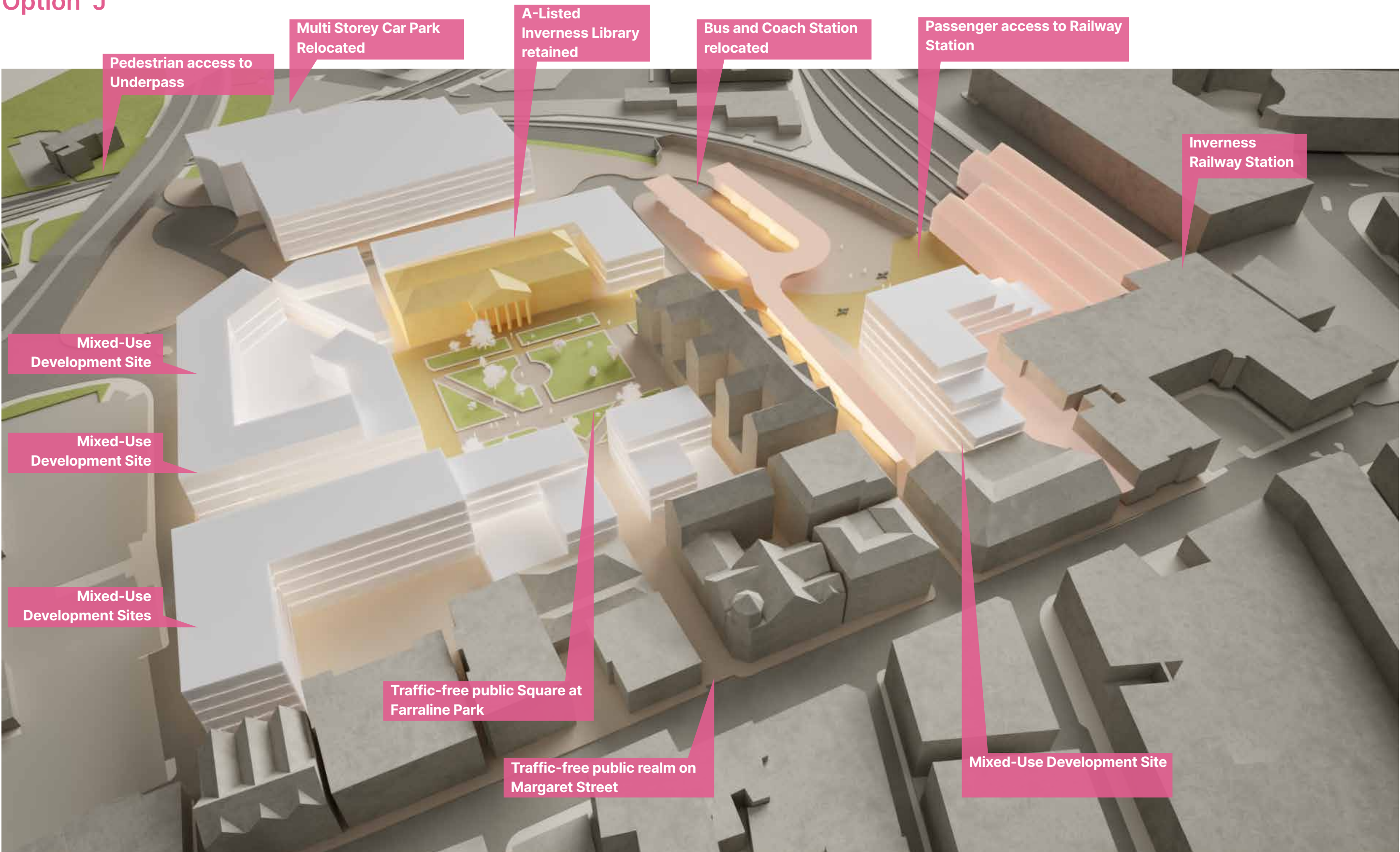
Option J

Option J

Strothers Lane Hybrid and Sawtooth 15 Stands - 780 Total CarParking 5 floors

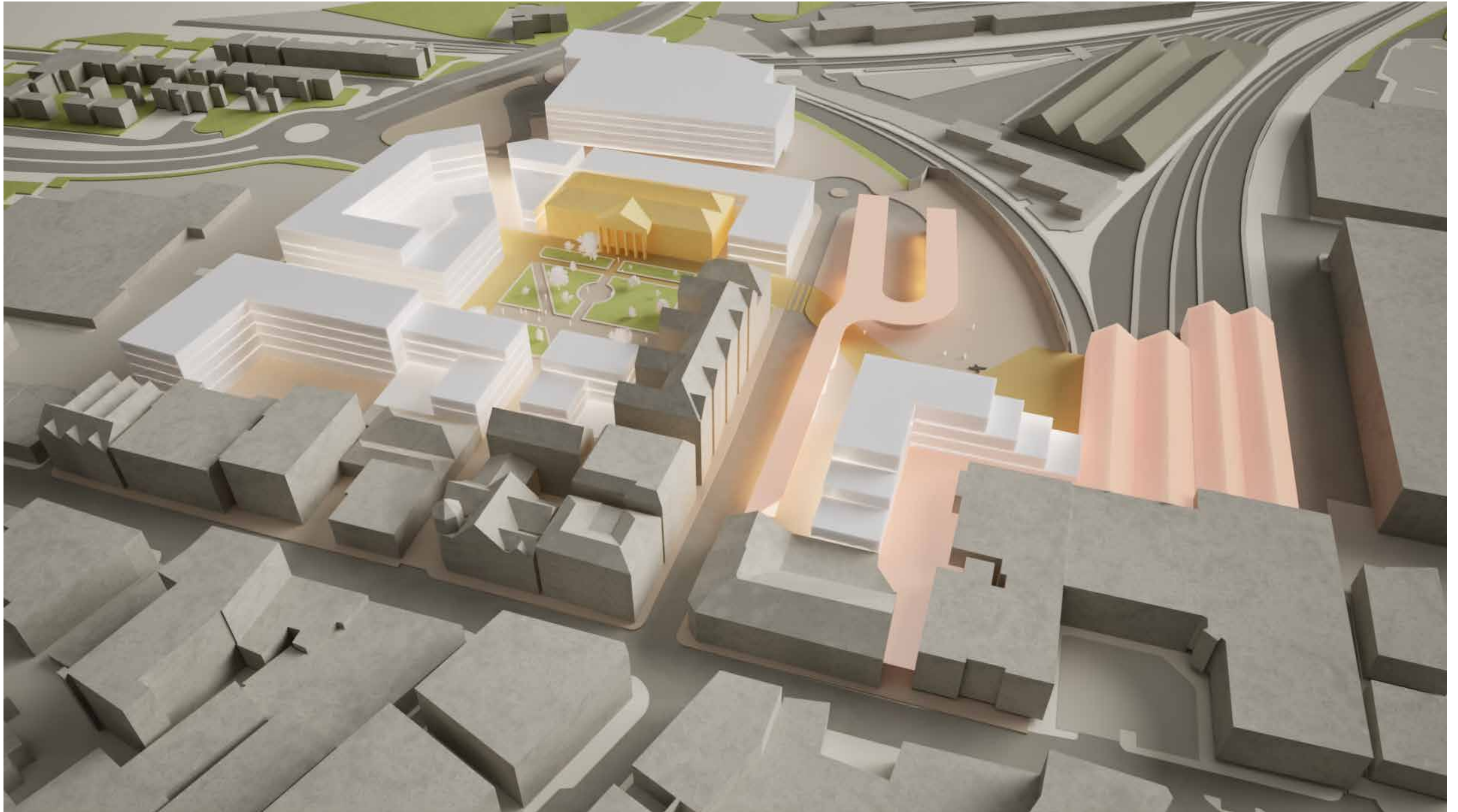


Option J



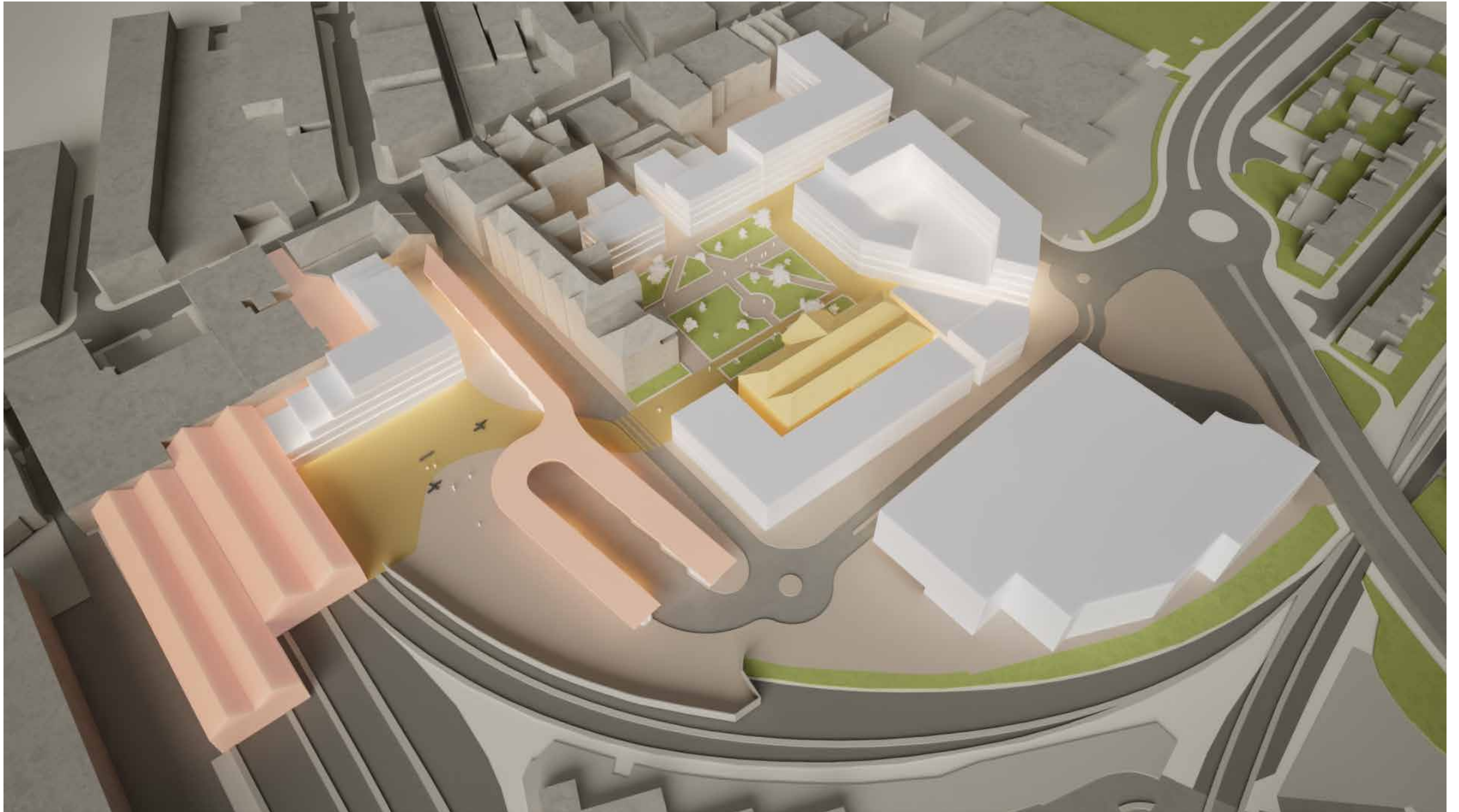
View from south-west

Option J



View from south-east

Option J



View from north-east

Option J

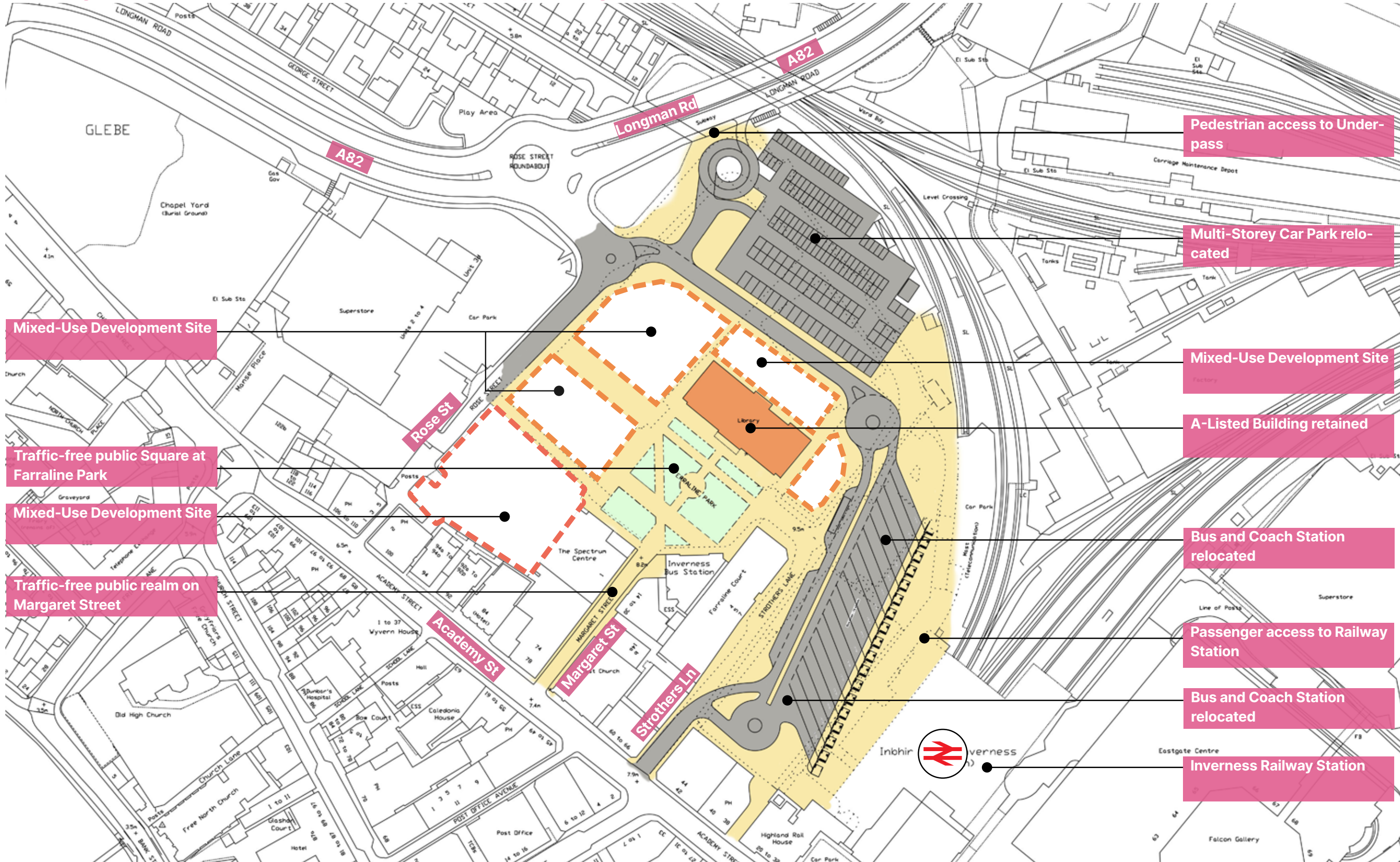


View from north-west

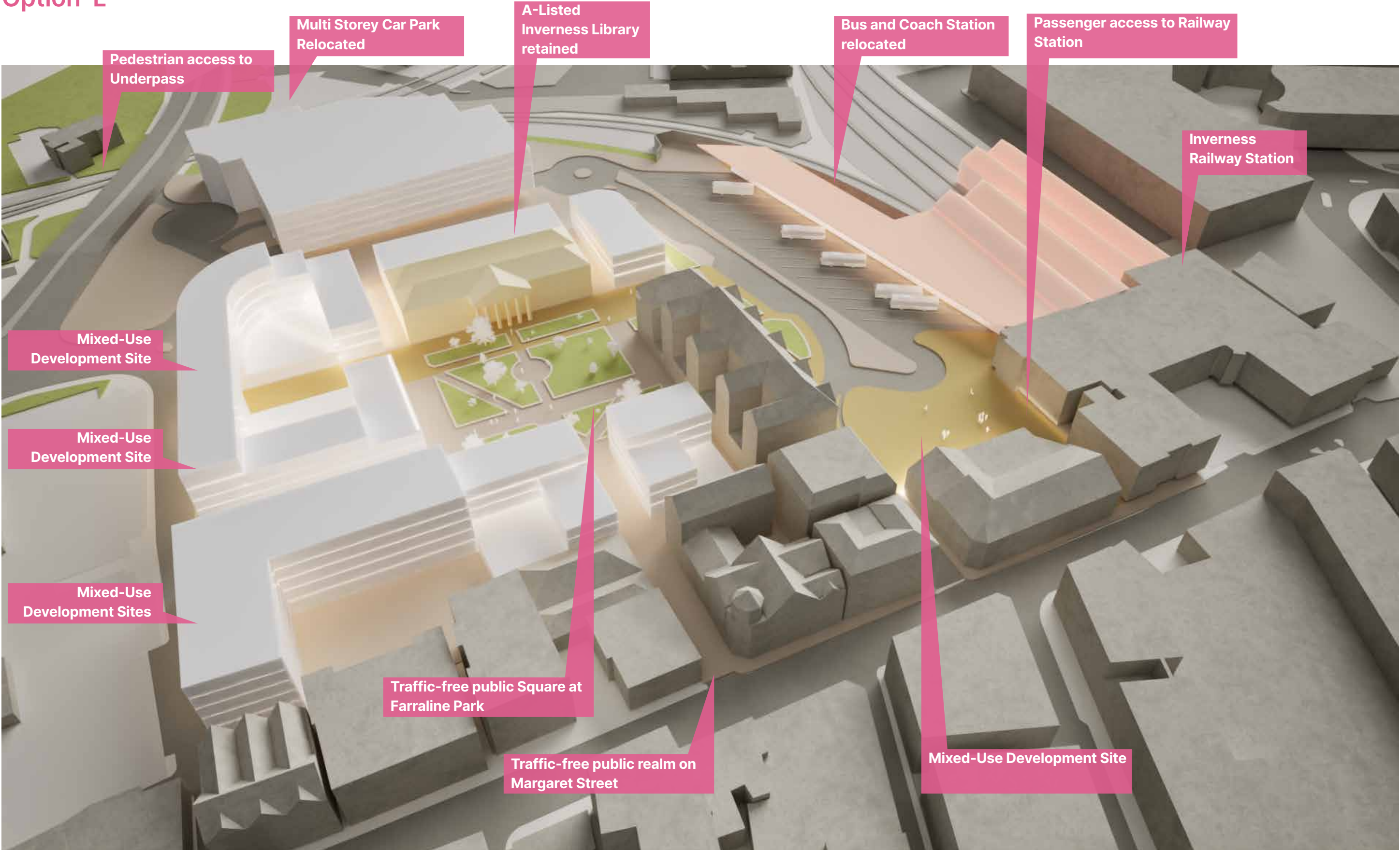
Option L

Option L

Existing Site DIRO 16 Stands- 864 Total Car parking 5 floors



Option L



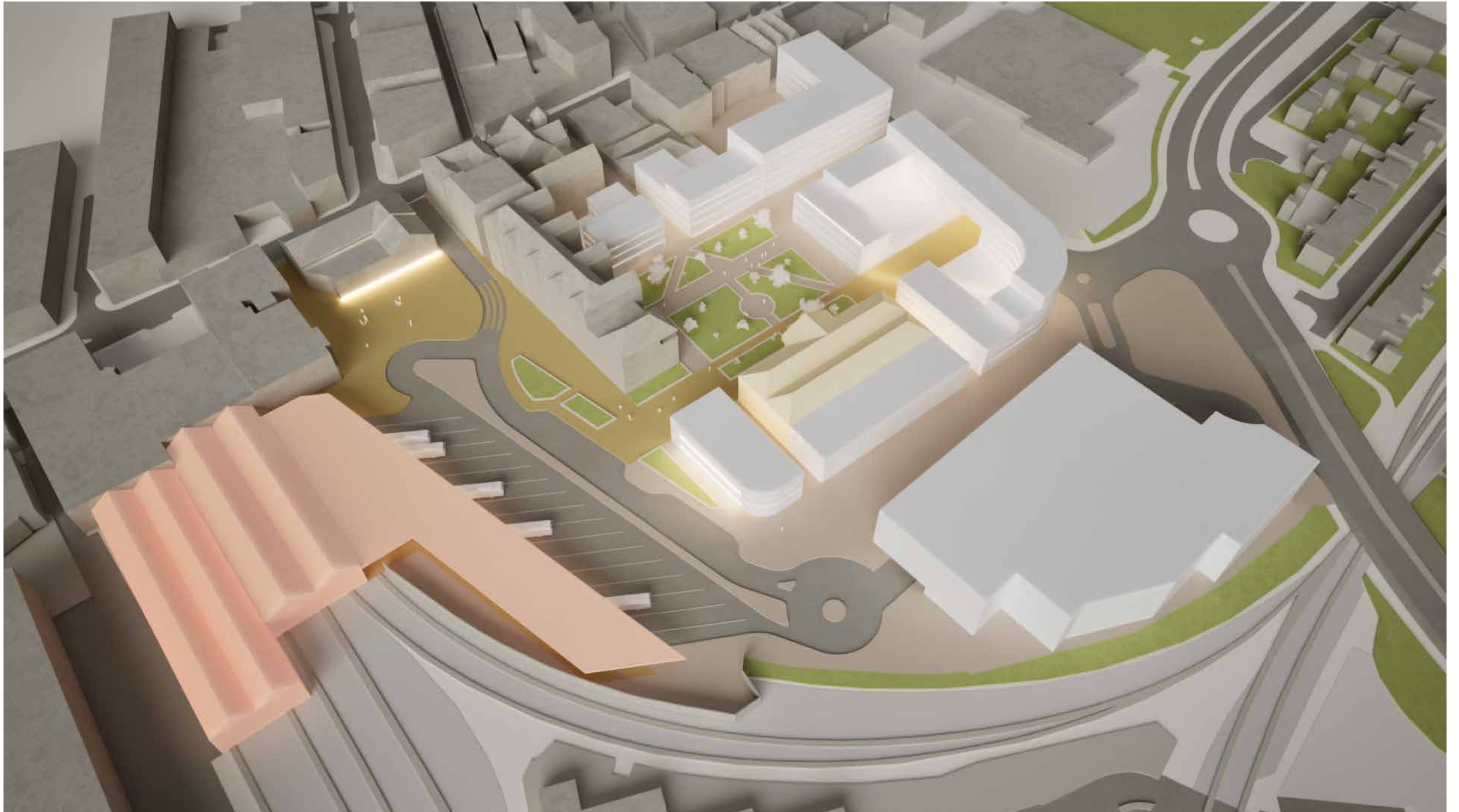
View from south-west

Option L



View from south-east

Option L



View from north-east

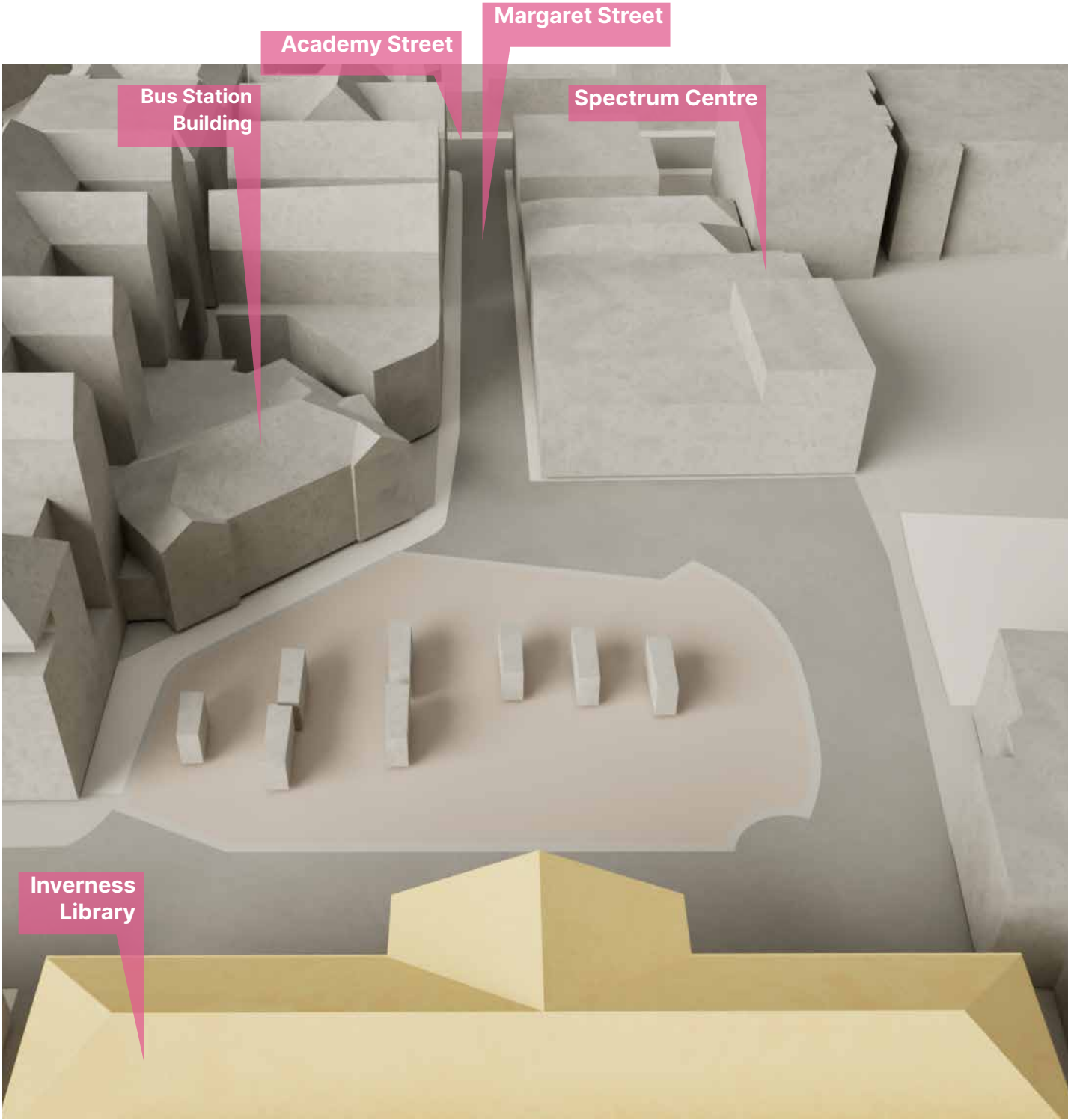
Option L



View from north-west

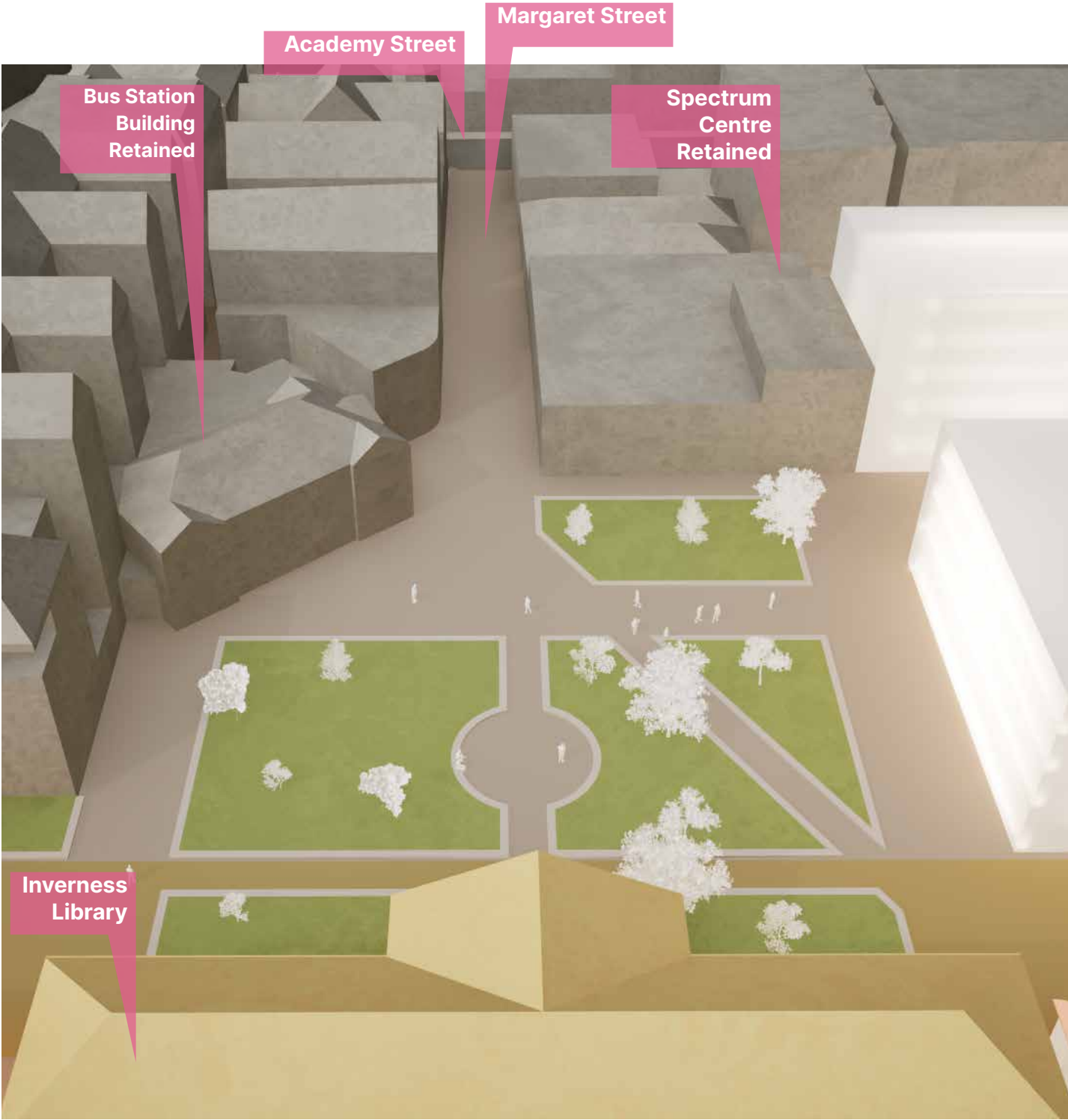
Design Studies : Farraline Park & Margaret Street

Farraline Park & Margaret Street Study



Farraline Park - As Existing

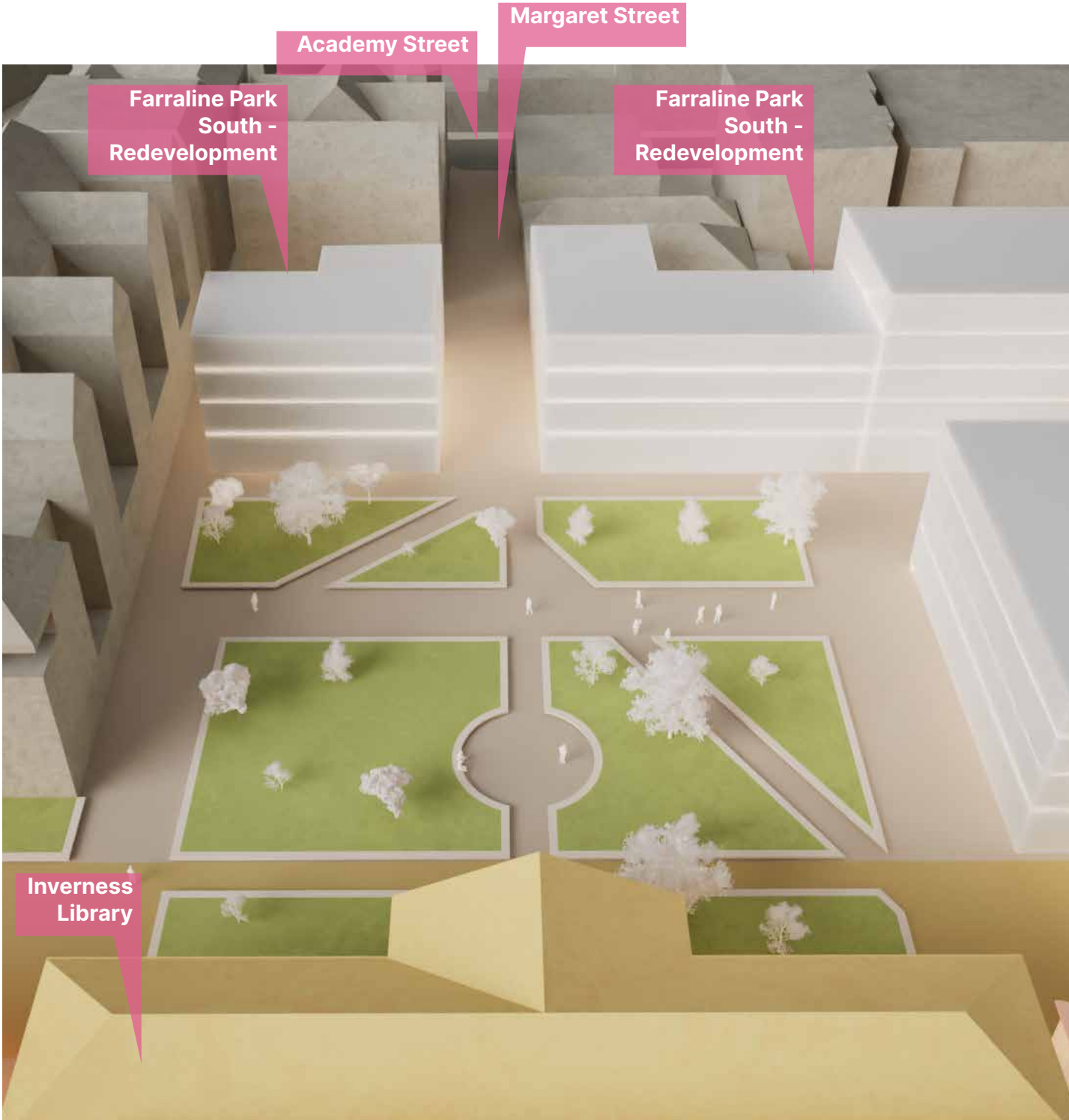
View from north



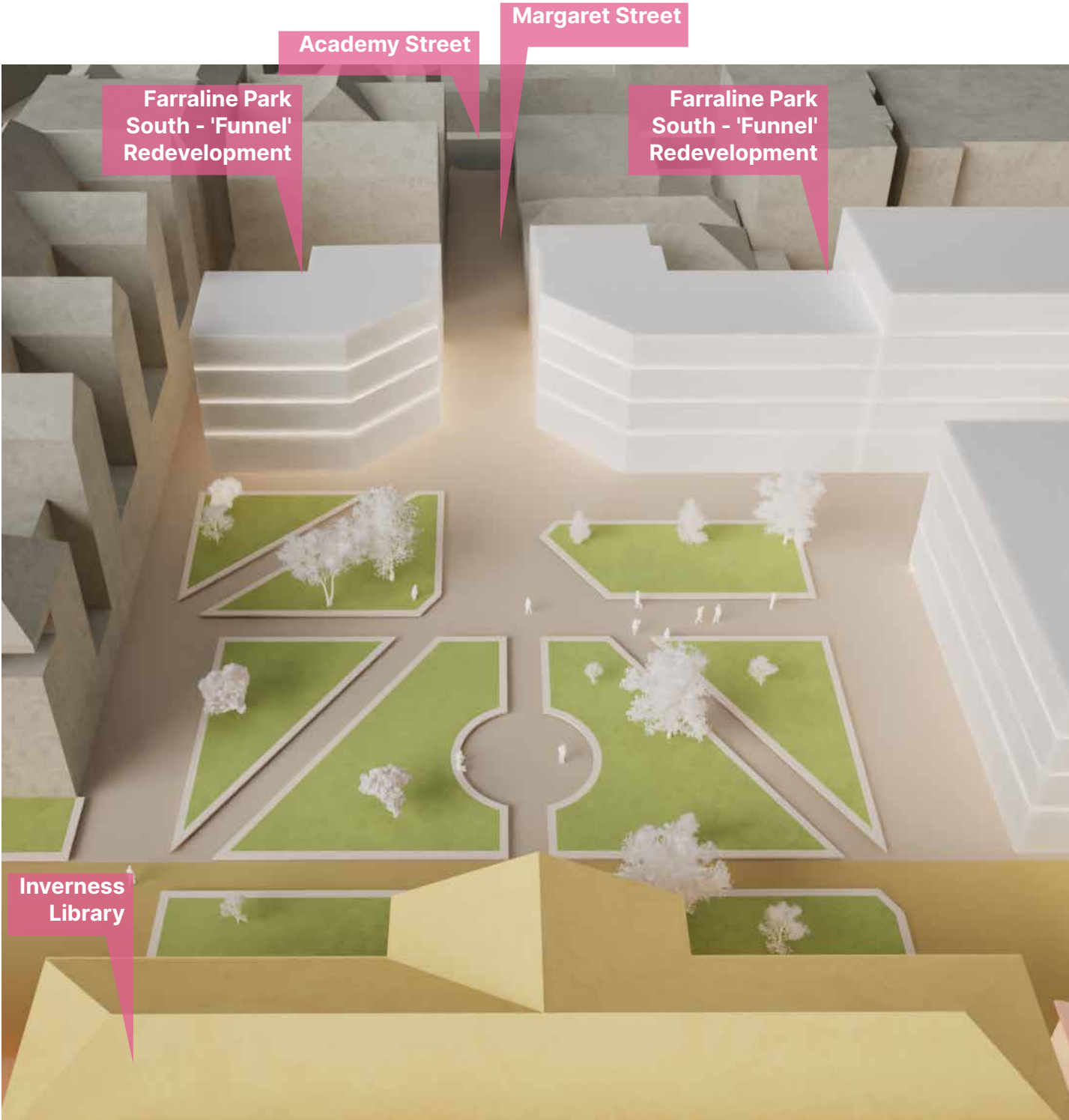
Option 1: Bus Station building and Spectrum Centre retained

View from north

Farraline Park & Margaret Street Study



Option 2 - Squared off at south side as per Options I, J, L



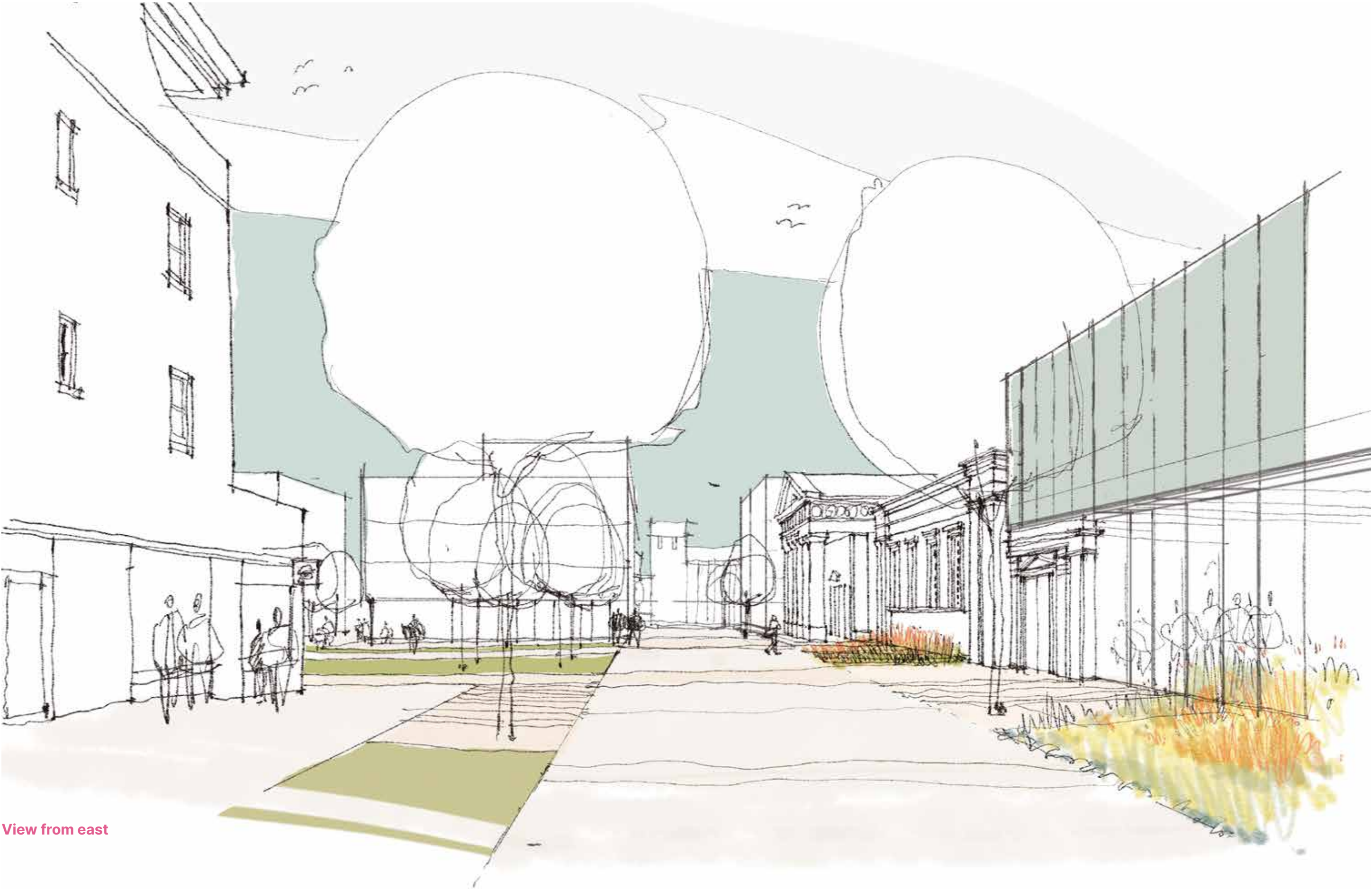
Option 3: Farraline Park south sided redeveloped with chamfered corners towards Margaret Street

Farraline Park Study



View from south-east

Farraline Park Study



View from east

Farraline Park Study



View from south



View from north-west

Farraline Park Study



View from west



View from south-west

Austin-Smith: Lord

Enhancing Life & Environments By Design

Bristol

40 Berkeley Square
Bristol BS8 1HP

+44 (0)117 239 0500
bristol@austinsmithlord.com

Glasgow

25 Bothwell Street
Glasgow G2 6NL

+44 (0)141 223 8500
glasgow@austinsmithlord.com

Cardiff

18 Park Place
Cardiff CF10 3DQ

+44 (0)2920 225 208
cardiff@austinsmithlord.com

Liverpool

Port of Liverpool Building
Pier Head L3 1BY

+44 (0)151 227 1083
liverpool@austinsmithlord.com

austinsmithlord.com

Austin-Smith:Lord Ltd is a Limited Company
registered in England & Wales with registered
number 11773049